

GIBSON ISLAND QUADRANGLE
MARYLAND
7.5 MINUTE SERIES (ORTHOPHOTOQUAD)



State of Maryland
Parris N. Glendening, Governor
Kathleen Kennedy Townsend, Lt. Governor
Department of Natural Resources
J. Charles Fox, Secretary
Karen M. White, Deputy Secretary
Resource Assessment Service
Paul O. Massicot, Director
Maryland Geological Survey
Emery T. Cleaves, Director







Shoreline Changes
Gibson Island Quadrangle, MD

Compiled by

Maryland Geological Survey
Coastal and Estuarine Geology Program
2300 St. Paul Street
Baltimore, Maryland 21218
Telephone: (410) 554-5500
Website: www.mgs.md.gov

2001

LEGEND

-  1845 Shoreline
-  1898 Shoreline
-  1942 Shoreline
-  1965 Shoreline
-  1975, 1976 Shoreline
-  1994 Shoreline

SOURCES OF DATA

Base Image
Orthophotoquad (39076-A4-OQ-024) produced by the U.S. Geological Survey from the following 1:40000 scale aerial (NAPP) photographs:

NAPP Photo ID	Date of Photography
14-55	4/14/1989
19-166	4/20/1989
19-168	4/20/1989

Shorelines
1845, 1898, 1942 - Historical Shorelines CZM Map 32A (Maryland Geological Survey, 1975); digitized using AutoCAD

1965, 1975, 1976 - National Oceanic and Atmospheric Administration, National Ocean Service T-sheets listed below; digitized using GSMAP or AutoCAD

T-sheet	Field Edit	Date of Photography
T-12660	none	1965
T-12955	none	1965
TP-00850	1975	1974
TP-00964	none	1976
TP-00965	none	1976

1994 - orthophotoquad shoreline extracted from a Maryland Department of Natural Resources (DNR) digital wetlands delineation based on photo interpretation of DNR digital orthophoto quarter quads (Gibson Island - NE, NW, SE, SW) flown on April 8, 1994

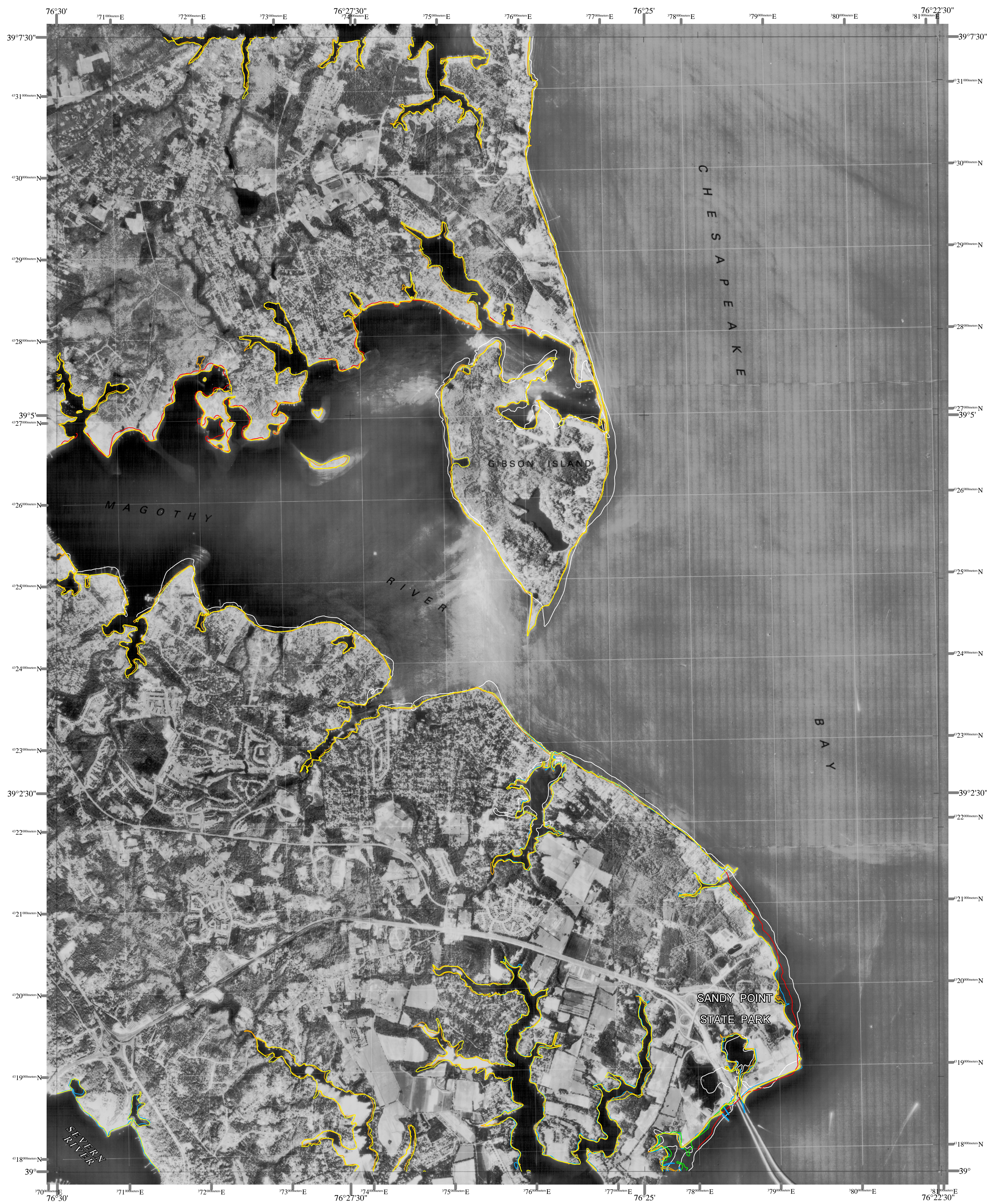
ACKNOWLEDGMENTS

This map was prepared using the geographic information system TNTmips by MicroImages, Inc.

Partial funding was provided by a grant from the National Oceanic and Atmospheric Administration (Award No. NA07OZ0118), administered by the Maryland Department of Natural Resources, Coastal Zone Management Program (CZM Grant M01-056 CZM 040).

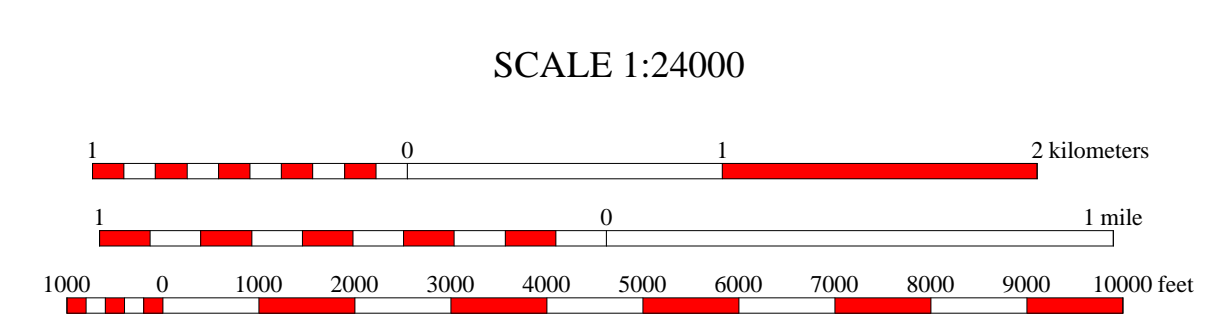
The facilities and services of the Maryland Department of Natural Resources are available to all without regard to race, color, religion, sex, sexual orientation, age, national origin, or physical or mental disability.

This document is available in alternative format upon request from a qualified individual with a disability.



North American Datum of 1983 (NAD 83)
Projection and 1000-meter grid ticks:
Universal Transverse Mercator: zone 18

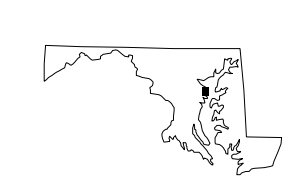
The North American Datum of 1927 (NAD 27)
shown as dashed corner ticks.



HORIZONTAL DATUM NAD 83

GIBSON ISLAND, MD
MGS-01-092-1
Second Edition

DATES OF PHOTOGRAPHY
A April 14, 1989
B April 20, 1989



1	2	3
4	5	6
7	8	

- 1 Curtis Bay
- 2 Sparrows Point
- 3 Swan Point
- 4 Round Bay
- 5 Love Point
- 6 South River
- 7 Annapolis
- 8 Kent Island

INDEX TO ADJOINING 7.5' MAPS

