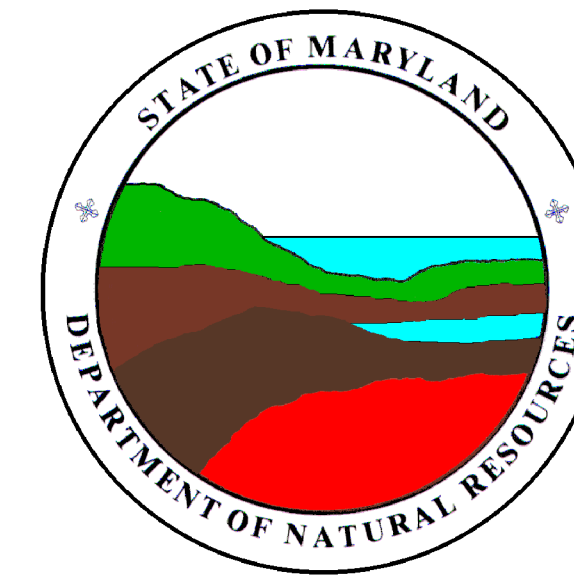


GUNPOWDER NECK QUADRANGLE  
MARYLAND  
7.5 MINUTE SERIES (ORTHOPHOTOQUAD)



State of Maryland  
Parris N. Glendening, Governor  
Department of Natural Resources  
Sarah J. Taylor-Rogers, Secretary  
Resource Assessment Service  
Paul Massicot, Director  
Maryland Geological Survey  
Emery T. Cleaves, Director





Shoreline Changes  
Gunpowder Neck Quadrangle, MD

Compiled by

Maryland Geological Survey  
Coastal and Estuarine Geology Program  
2300 St. Paul Street  
Baltimore, Maryland 21218  
Telephone: (410) 554-5500  
Website: www.mgs.md.gov

2000

LEGEND

-  1846 Shoreline
-  1933 Shoreline
-  1974 Shoreline
-  1994 Shoreline

SOURCES OF DATA

Base Image  
Composite of resampled digital orthophoto quarter quads (Gunpowder Neck - NW, SW, NE, SE) produced by the Maryland Department of Natural Resources (DNR) from aerial photography flown on April 8, 1994

Shorelines  
1846, 1933 - Historical Shorelines CZM Map 39A (Maryland Geological Survey, 1975); digitized using AutoCAD

1974 - National Oceanic and Atmospheric Administration - National Ocean Service T-sheets listed below; digitized using GSMAP or AutoCAD

T-sheet	Field Edit	Date of Photography
TP-00640	none	1974
TP-00641	1974	1972
TP-00642	1974	1972
TP-00643	1974	1972

1994 - orthophotoquad shoreline extracted from a DNR digital wetlands delineation based on photo interpretation of digital orthophoto quarter quads

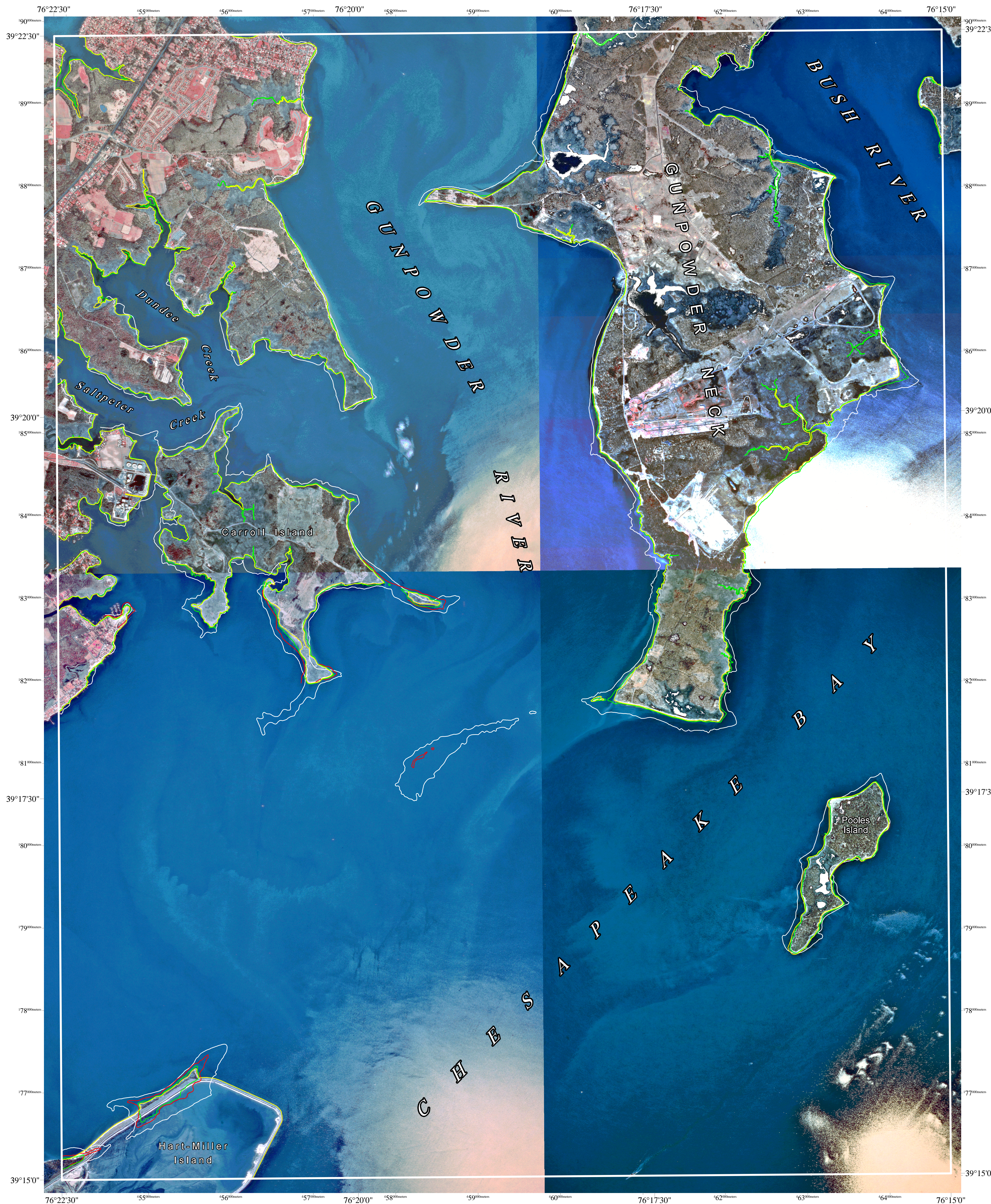
ACKNOWLEDGMENTS

This map was prepared using the Map and Image Processing System (MIPS) by MicroImages, Inc.

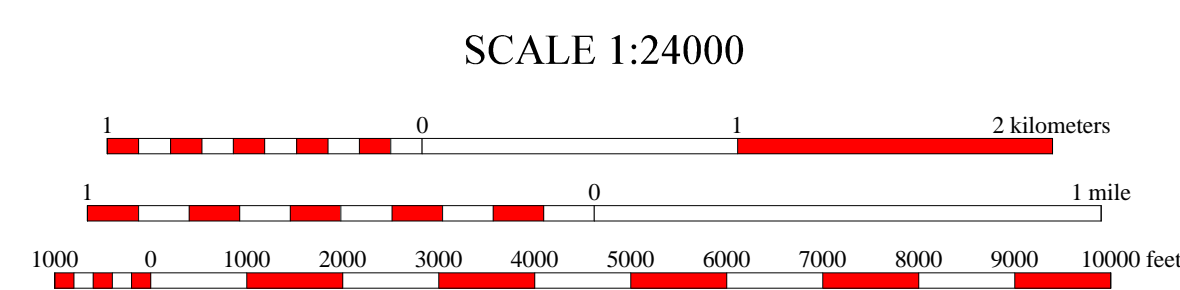
Partial funding was provided by a grant from the National Oceanic and Atmospheric Administration (Award No. NA 87OZ0236), administered by the Maryland Coastal Zone Management Program, Department of Natural Resources (CZM Grant M00-051 CZM 031).

*The facilities and services of the Maryland Department of Natural Resources are available to all without regard to race, color, religion, sex, sexual orientation, age, national origin, or physical or mental disability.*

*This document is available in alternative format upon request from a qualified individual with a disability.*

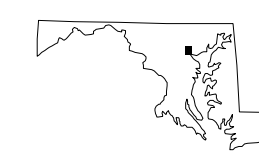


North American Datum of 1983 (NAD 83)  
Projection and 1000-meter grid ticks:  
Maryland State Plane Coordinate System



HORIZONTAL DATUM NAD 83

GUNPOWDER NECK, MD  
MGS-00-039-1  
Second Edition  
DATE OF PHOTOGRAPHY  
April 8, 1994



1	2	3
4	5	6
7	8	

INDEX TO ADJOINING 7.5' MAPS

