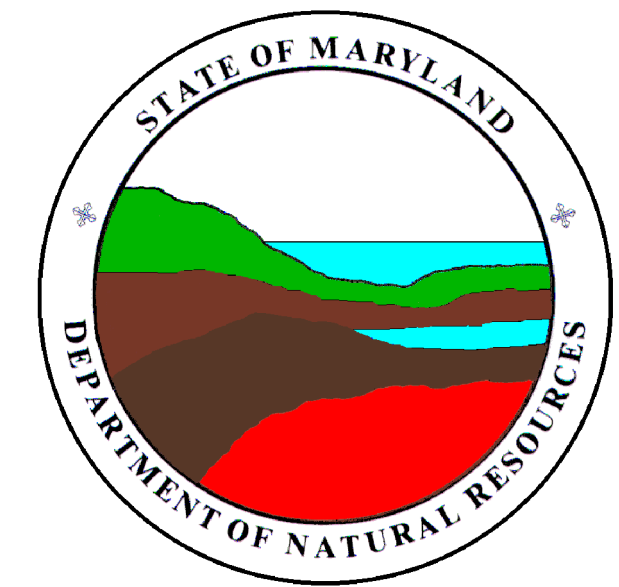


QUEENSTOWN QUADRANGLE  
MARYLAND  
7.5 MINUTE SERIES (ORTHO PHOTOQUAD)



State of Maryland  
Parris N. Glendening, Governor  
Kathleen Kennedy Townsend, Lt. Governor  
Department of Natural Resources  
J. Charles Fox, Secretary  
Karen M. White, Deputy Secretary  
Resource Assessment Service  
Paul O. Massicot, Director  
Maryland Geological Survey  
Emery T. Cleaves, Director




Shoreline Changes  
Queenstown Quadrangle, MD

Compiled by

Maryland Geological Survey  
Coastal and Estuarine Geology Program  
2300 St. Paul Street  
Baltimore, Maryland 21218  
Telephone: (410) 554-5500  
Website: www.mgs.md.gov

2001

LEGEND

-  1846 Shoreline
-  1942 Shoreline
-  1992 Shoreline

SOURCES OF DATA

Base Image

Composite of resampled digital orthophoto quarter quads (Queenstown - NE, NW, SE, SW) produced by the Maryland Department of Natural Resources (DNR) from aerial photography flown on April 6, 1992

Shorelines

1846 - Historical Shorelines CZM Map 57A (Maryland Geological Survey, 1975); digitized using AutoCAD

1942 - National Oceanic and Atmospheric Administration, National Ocean Service T-sheet listed below; vectorized using CADCORE

T-sheet	Field Edit	Date of Photography
T-8267	1942	unknown

1992 - orthophotoquad shoreline extracted from a DNR digital wetlands delineation based on photo interpretation of digital orthophoto quarter quads

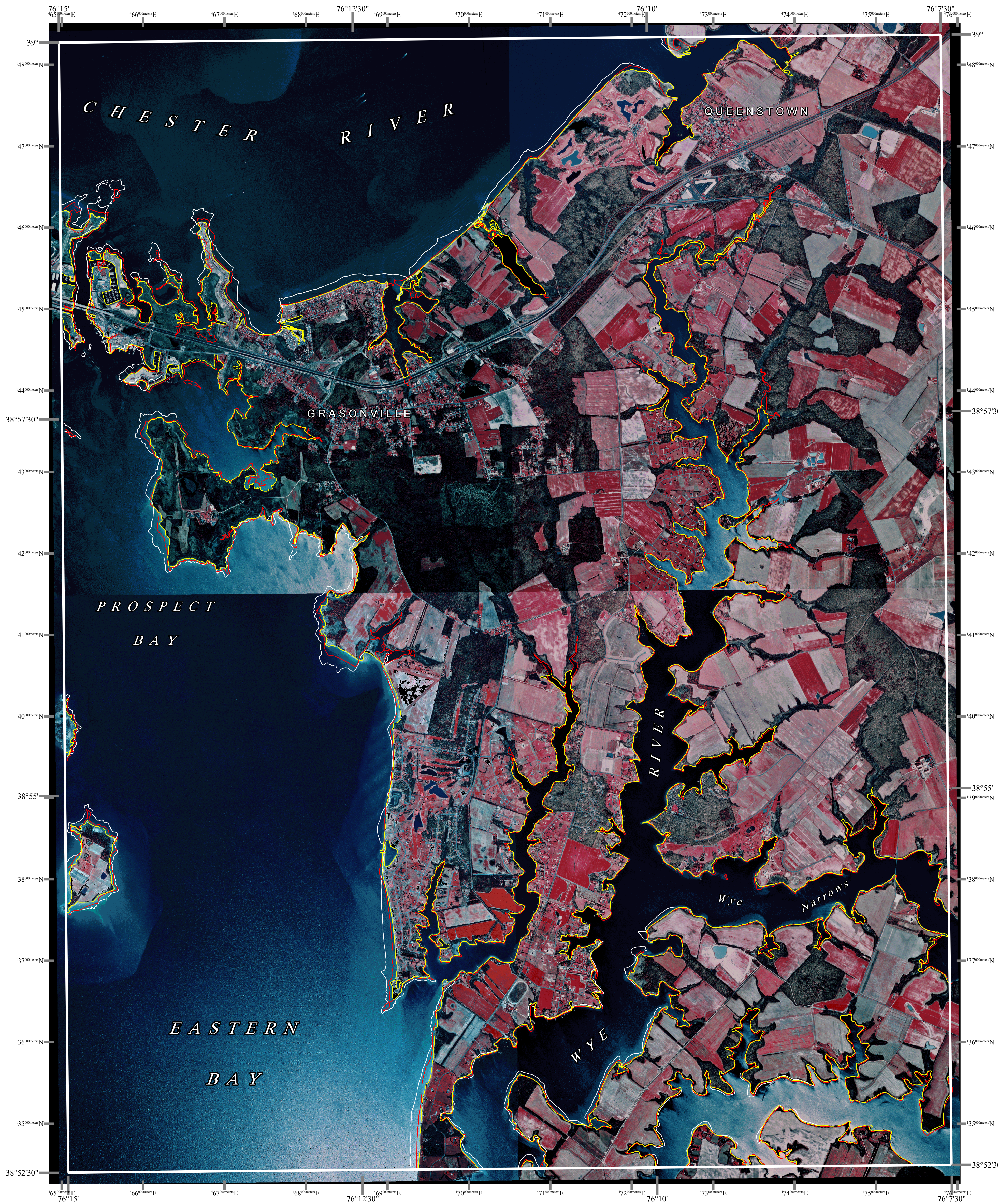
ACKNOWLEDGMENTS

This map was prepared using the geographic information system TNTmips by MicroImages, Inc.

Partial funding was provided by a grant from the National Oceanic and Atmospheric Administration (Award No. NA 07OZ0118), administered by the Maryland Department of Natural Resources, Coastal Zone Management Program (CZM Grant M01-056 CZM 040).

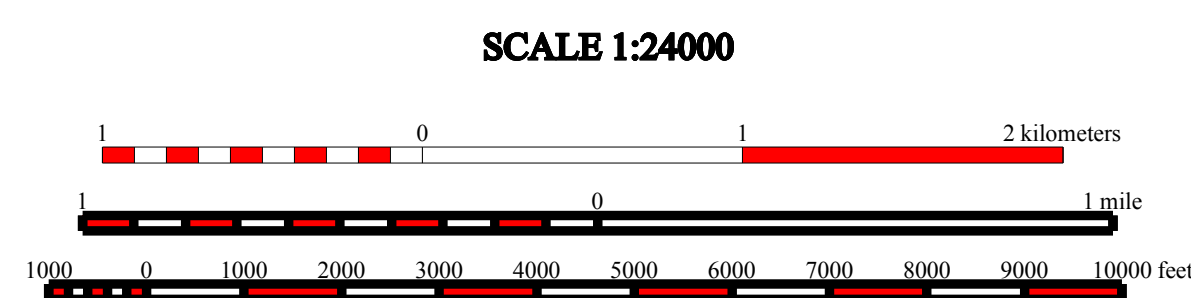
*The facilities and services of the Maryland Department of Natural Resources are available to all without regard to race, color, religion, sex, sexual orientation, age, national origin, or physical or mental disability.*

*This document is available in alternative format upon request from a qualified individual with a disability.*



North American Datum of 1983 (NAD 83)  
Projection and 1000-meter grid ticks:  
Maryland State Plane Coordinate System

QUEENSTOWN, MD  
MGS-01-194-1  
Second Edition  
DATE OF PHOTOGRAPHY  
April 6, 1992



HORIZONTAL DATUM NAD 83



1	2	3
4	5	6
7	8	

- 1 Love Point
- 2 Langford Creek
- 3 Centreville
- 4 Kent Island
- 5 Wye Mills
- 6 Claiborne
- 7 St. Michaels
- 8 Easton

INDEX TO ADJOINING 7.5' MAPS

